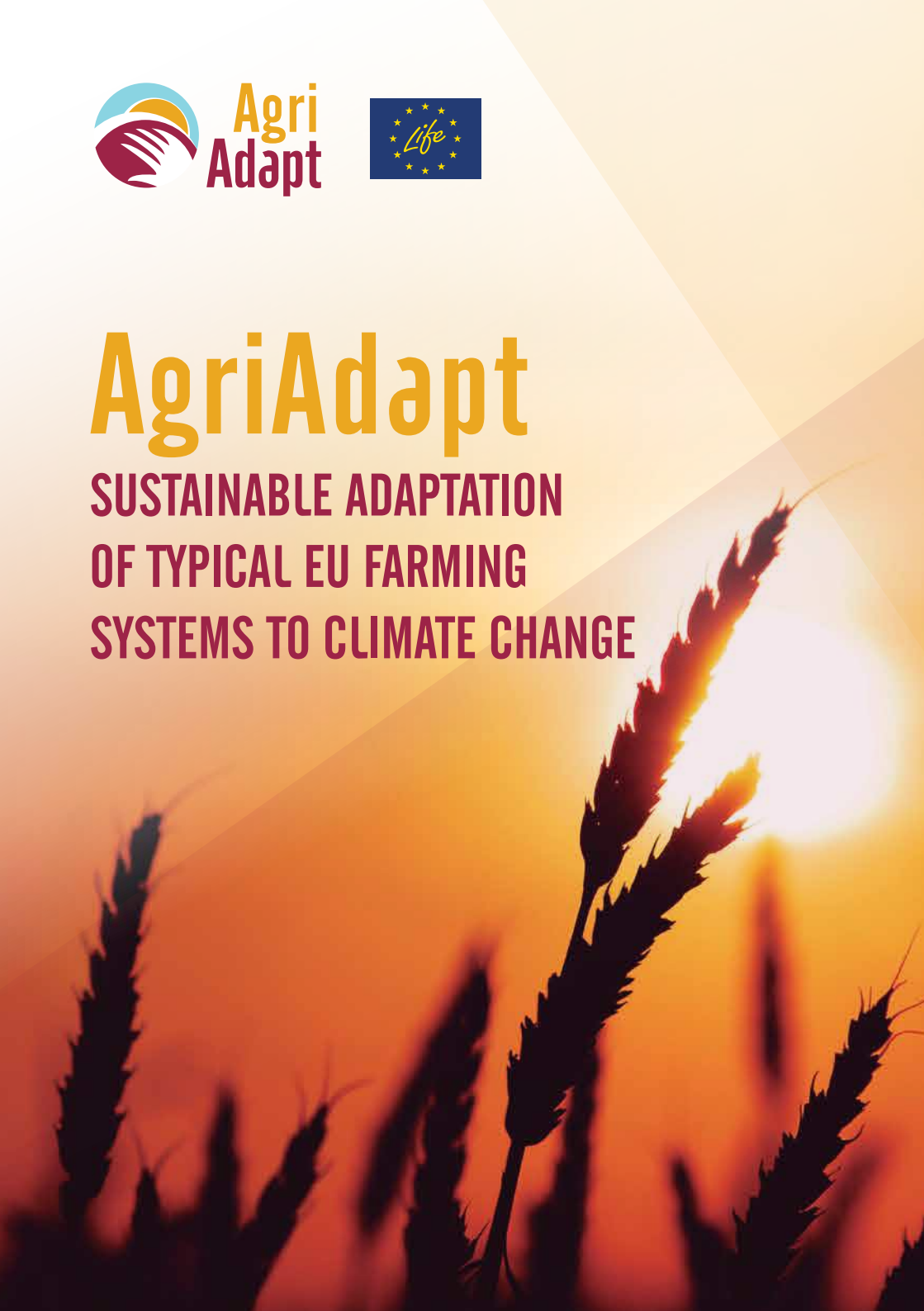




AgriAdapt

**SUSTAINABLE ADAPTATION
OF TYPICAL EU FARMING
SYSTEMS TO CLIMATE CHANGE**



Sustainably adapting the farming sector to climate change

Climate change is one of the most important current challenges the world is facing, including the farming sector. Although some climatic modifications will have positive effects on European agriculture, most changes will have negative impacts and will affect regions already suffering from environmental degradation.

European farmers will have to adapt to a changing climate through measures that must be sustainable and go beyond mere adjustments of current practices. These measures can also entail increasing efficiency, reducing costs, new market opportunities and better preparation for future legislation.

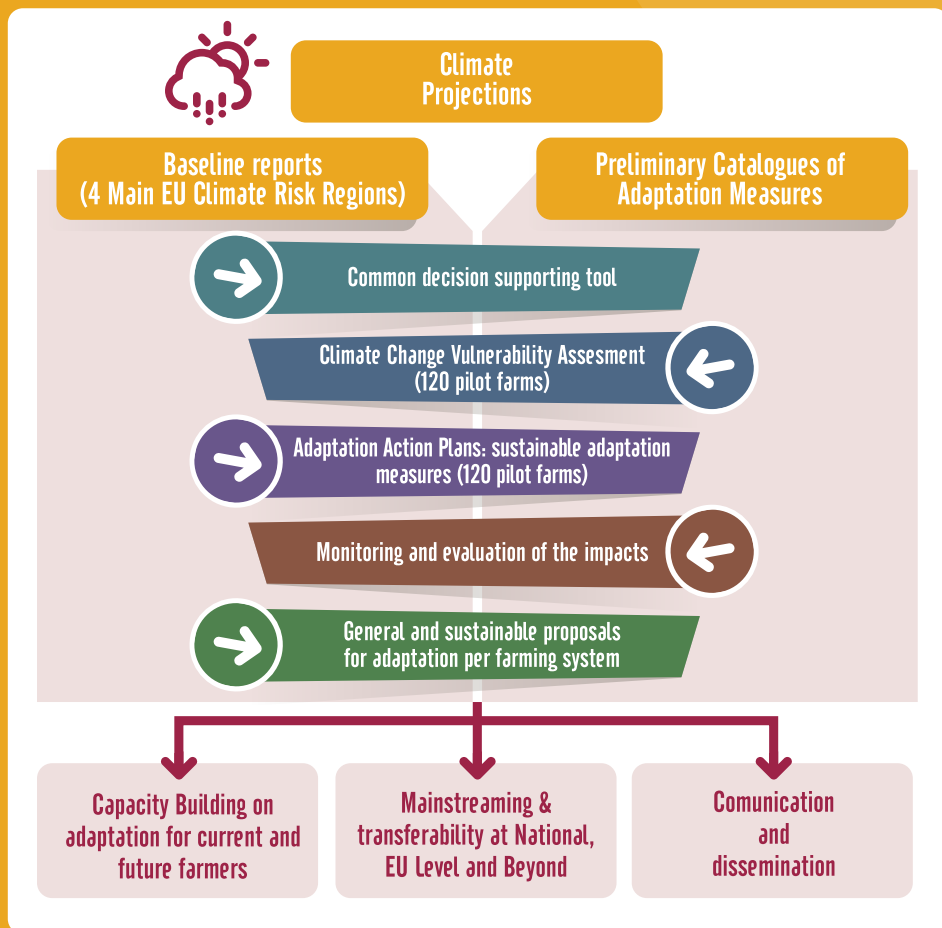
AgriAdapt is a European project sponsored by the LIFE programme of the European Union. It will demonstrate how sustainable adaptation measures can help livestock, arable and permanent crop farms become more climate resilient. It will also explore the other positive environmental benefits of these measures.

Generating knowledge to make a difference

AgriAdapt aims to obtain transferrable and useful results. Specific training material will be designed for the farming community. The quantitative and qualitative information elaborated in **AgriAdapt** will be compiled in a “training package” on adaptation to climate change in the farming sector that will be distributed in collaboration with advisory structures.

The dissemination and transferability of the project will include actions with key stakeholders. Workshops, conferences and webinars will provide opportunities to involve agrifood companies, NGO, farmers associations, insurance companies, universities or experts. Policy-makers at regional, national and EU level will be addressed through expert meetings, in order to make a tangible contribution to relevant policies.

INVOLVING FARMERS IN THE FOUR MAIN EU CLIMATE RISK REGIONS



A common **decision tool** will be developed to analyse climate change vulnerability, first at the **level of agroclimatic zones**, and then at **farm level**. The tool will cover agronomic and economic issues, and will be operational in the four main EU climate risk regions and for a diversity of farming systems (arable land, livestock, permanent crops).

All project partners will analyse, working side by side with farmers, 30 pilot farms (120 in total) and will develop farm-tailored **sustainable adaptation measures** for each of them. These adaptation measures will be implemented, their effectiveness will be tested in terms of climate change vulnerability and the measures will be updated annually according to the obtained results. The results will be summarised according to their transferability in order to create **General proposals** for three key farming systems for each of the four regions.

EU FARMLAND AND CLIMATE CHANGE RISKS

- ↘ Water availability
- ↘ Risk drought, heat spells
- ↘ Risk soil erosion
- ↘ Growing season, crop yields
- ↘ Optimal crop areas

- ↘ Floods risk
- ↘ Hotter and drier summers
- ↘ Sea level
- ↘ Risk crop pests, diseases
- ↘ Animal health, welfare

- ↘ Summer rainfall
- ↘ Winter storms, floods
- ↘ Length growing season, yields
- ↘ Suitable farmland
- ↘ Pests, diseases risks

- ↘ Winter rainfall, floods
- ↘ Summer rainfall
- ↘ Risk drought, water stress
- ↘ Soil erosion risk
- ↘ Yields, range of crops

ESTONIA

ESTONIAN UNIVERSITY OF LIFE SCIENCES (EMU)
ragnar.leming@emu.ee

GERMANY

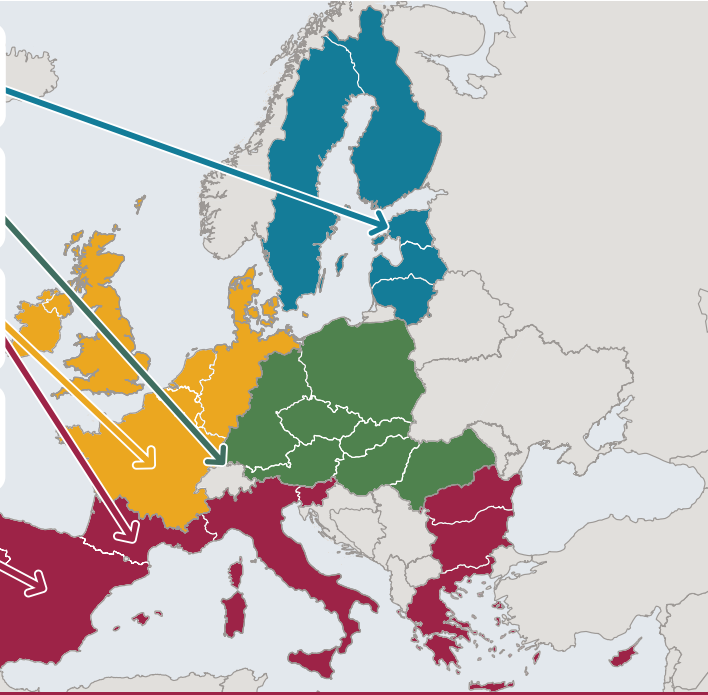
LAKE CONSTANCE FOUNDATION
patrick.troetschler@bodensee-stiftung.org

FRANCE

SOLAGRO
nicolas.metayer@solagro.asso.fr

SPAIN

FUNDACIÓN GLOBAL NATURE
vsanchez@fundacionglobalnature.org



EC, April 2009

LIFE15 CCA/DE/000072



Financed by:



With the contribution of the LIFE financial instrument of the European Union

info@agriadapt.eu | www.agriadapt.eu